

COVID-related pupil/student absence – Printable Guidance for Parents and Pupils/Students (1/2)

The guidance below addresses what a positive or negative test result means for your child and your household, and the support available to you.

What happens if a close contact of my child tests positive on a Lateral Flow Device?

- They can consent to take part in 'serial contact testing' where they are tested daily for 7 days
- If they test negative, they can remain in school/college that day
- If you or they do not wish to take part, they will need to self-isolate

What if my child tests negative for COVID-19 on a Lateral Flow Device?

- There will be no need for them to self-isolate and they can remain in school / college as normal
- Social distancing and face coverings where appropriate will remain necessary

What do I need to do if my child tests positive for COVID-19 on a Lateral Flow Device?

- They will need to take a further 'PCR test' to confirm the positive result
- Contact the school / college to inform us of the PCR test result which you will receive via text / email
- If the PCR result is positive, your child will need to self-isolate for a minimum of 10 days

How does my child testing positive impact the rest of my household?

- Your household will have to self-isolate for 10 days
- Follow the [latest government guidance](#).

When can my child return to school / college after testing positive for COVID-19?

- Your child can stop self-isolating and return to school / college on day 11 **after the positive PCR test** if they've not had a high temperature for 48 hours and are well
- They can return then even if they have a cough or loss of taste/smell as these symptoms can last for several weeks

COVID-related pupil/student absence – Printable Guidance for Parents and Pupils/Students (2/2)

The guidance below addresses what a positive or negative test result means for your child and your household, and the support available to you.

What does a positive result mean for my child's education?

We have a strong commitment to ensuring all pupils/students can access a wide range of learning resources remotely and will continue to support their education whilst they are self-isolating.

Additional information can be found <https://bit.ly/covidhomelearning>

IMPORTANT: If, at any point, a student/pupil or staff member begins displaying symptoms they must [follow government guidelines](#), [order a PCR test](#) and self-isolate.

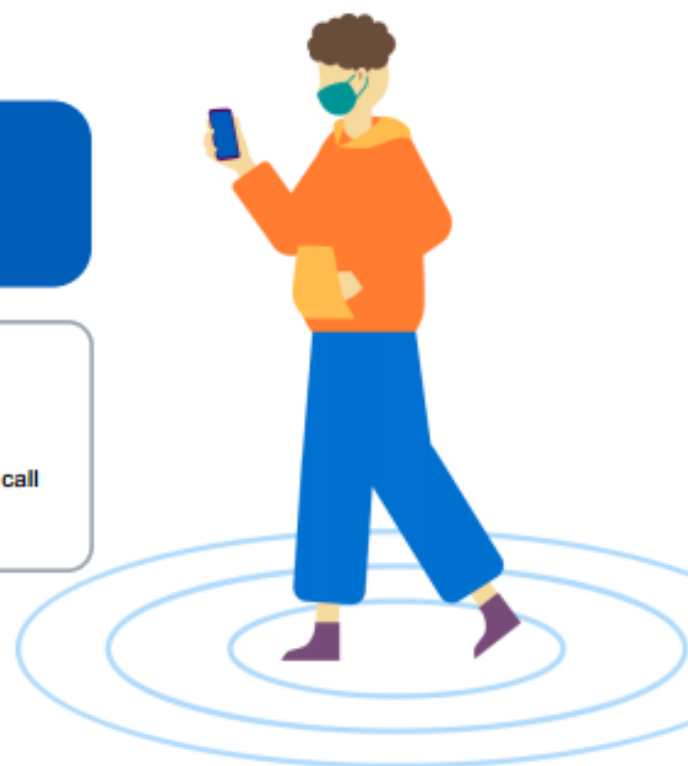


Addressing your concerns

For more information you can visit:

<https://bit.ly/covidhomelearning>

If you're worried about your child medically, visit <https://www.nhs.uk/> or call 111.



Test instructions / Leaflet

For pupils/students (supervised self-swabbing)

NHS
Test and Trace

HOW TO DO YOUR TEST

WHILE THIS IS A SELF-SWAB TEST, THERE WILL BE A TESTING HELPER WHO WILL OVERSEE THINGS AND PROVIDE HELP IF YOU NEED


- 

YOUR COVID-19 TEST WILL BE SCHEDULED. IF YOU ARE UNDER 16, YOUR PARENT / CAREER WILL HAVE CONSENTED
- 

YOUR TEST WILL BE FAST AND WHILE IT MIGHT FEEL A LITTLE UNCOMFORTABLE, IT WON'T HURT YOU
- 

BLOW YOUR NOSE IF NEEDED. WASH AND DRY/SANITIZE YOUR HANDS. REMOVE THE SWAB BEING CAREFUL NOT TO TOUCH THE SOFT PART
- 

10 SECS
OPEN YOUR MOUTH WIDE AND USE A MIRROR TO LOOK AT THE BACK OF YOUR THROAT. THEN USE THE SWAB TO RUB FIRMLY 4 TIMES ON EACH SIDE
- 

REMOVE THE SWAB CAREFULLY WITHOUT TOUCHING YOUR TEETH, TONGUE OR GUMS
- 

GENTLY PLACE IT ABOUT 2-2.5 CM INSIDE ONE OF YOUR NOSTRILS. ROLL THE SWAB 4-5 TIMES ALONG THE LINING OF THE NOSTRIL. THIS WILL TAKE 10-15 SECONDS
- 

YOUR SWAB CAN THEN BE PLACED IN A TUBE FOR TESTING. THIS TAKES ABOUT 30 MINUTES
- 

AFTER THIS YOU'RE DONE. GENTLY REMOVE THE SWAB BEING CAREFUL NOT TO LET ANYTHING TOUCH THE TIP

YOUR SCHOOL / COLLEGE WILL CONTACT YOU OR YOUR PARENT / CAREER WITH THE RESULTS AND LET YOU KNOW WHAT HAPPENS NEXT

Please find instructional leaflet in the separate attachment on the portal