

KS4

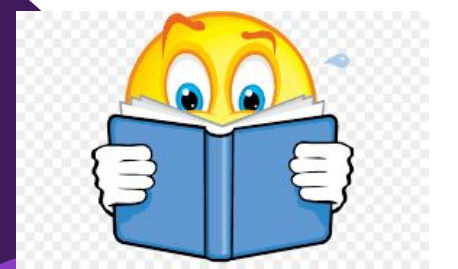


Assessment- Compare a contrast and fiction and non-fiction extract on suffering

An exploration of real world issues and their impact – such as homosexuality, gender, ce

Tracking through key events and relationships in a chosen novel.

YEAR 8



KS3

YEAR 7

Exploring a range of punctuation, sentence structures and brevity devices



Assessment- Write a report for the chief of police presenting your chief suspect in the dog-knapping case.

Beginning to analyse language and structure when exploring how a character is presented in a text

Assessment- analysing the presentation of a character in a selected novel

Building on reading and analytical skills to apply to Gothic fiction- analysing language, writer's intentions and effect on reader

Recognising and exploring 'Gothic conventions'

Assessment- Analyse how tension is created in a Gothic extract

Exploring a range of villainous characters from the 19th century to modern day



Assessment- Create and describe a villainous person of authority

Analysing a range of Gothic villains such as Dracula and Frankenstein

Exploring wider context and the influence it can have on a text

Exploring how a writer creates and presents characters

Investigating a text and whether it meets expectations of the novel/genre

Assessing case studies and closely examining a range of text types to analyse who the guilty suspect is

Assessment- Write a review of a chosen novel

Exploring the significance of standard and non-standard English, as well as accent/ dialect and idiolect in written discourse

Varying vocabulary and sentence structures for effect.

Exploring non-fiction writing in the form of a review

Promoting reading for enjoyment

Tracking through the key events and characters in a novel, and assessing the changes

Identifying the importance of audience, purpose and form

Writing a range of persuasive speeches to specific audiences and for specific purposes

Closely analysing how language and structural features are used by a writer to develop characters.

Assessment: Create and deliver a persuasive speech

Identifying and analysing a range of language features and poetic techniques in poetry.

Exploring a range of war poetry from an array of writers- ex-soldiers and patriots

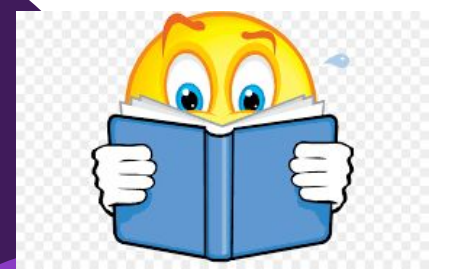
Investigating how writers create characters with language and literary techniques



TERM 5: WW1 and WW2 Poetry



TERM 6: Class Reader: Review



TERM 1: Class Reader: Contemporary Literature

Closely examining how a writer builds character relationships across a novel- motives, intentions and development

Comparing and contrasting non-fiction and fiction writing

Assessment: Analyse the relationship between characters in an 'exploding extract' style Q

Transactional writing- focus on speech writing

Exploring a range of speeches and applying language, tone and structure to own writing of speeches

Identifying a range of persuasive devices and their importance in convincing an audience

To explore a range of extracts that track through key events of a Shakespeare play

Exploring contextual issues surrounding a play

To have a stronger grasp of Shakespearean language

Exploring and analysing the presentation of characters and themes through language, form and structure



TERM 2: The Power of Language



Evaluating writer's intentions through language analysis, structure and punctuation.

Examining a range of non-fiction and fiction pieces of writing

Assessment: Write an article based on a statement on sports

Exploration of current issues - gender, race, ethics, disability and cheating in sport

Identifying and applying a range biased and persuasive features and their function when writing articles and to engage

Assessment: Compose an engaging anecdote

Exploring and applying vocabulary use for effect

Exploring how a range of anecdotes have used punctuation, grammar and structure to engage a reader

Structuring a piece of writing for effect and organising a coherent plot for an anecdote.

TERM 4: Narrative Writing



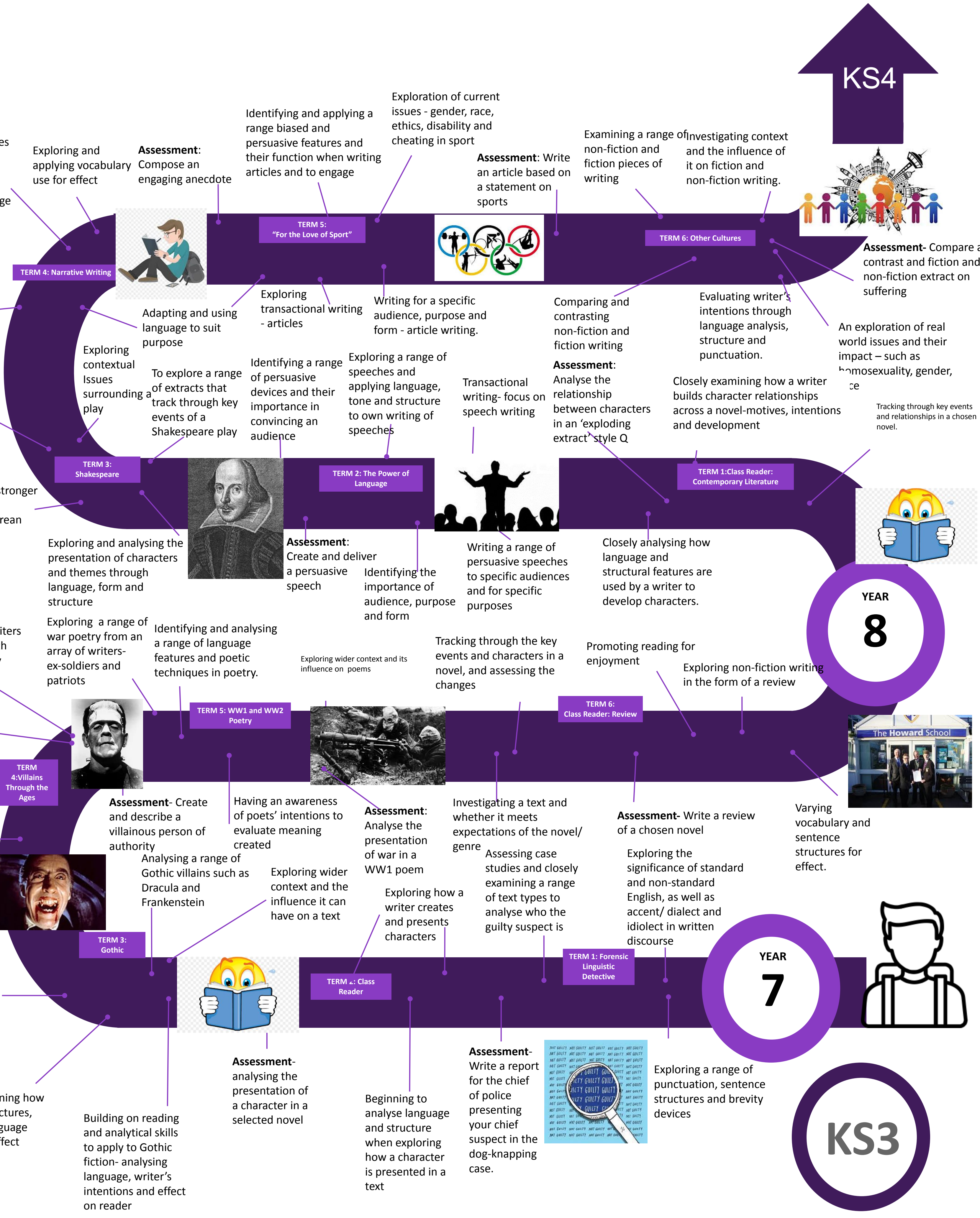
Exploring transactional writing - articles

Writing for a specific audience, purpose and form - article writing.



Investigating context and the influence of it on fiction and non-fiction writing.

TERM 6: Other Cultures



English at The Howard School