

**THE
HOWARD
SCHOOL**

Year 7-11
Uniform and Equipment
2024/2025

The Howard School - uniform

All students are required to wear the correct uniform when attending The Howard School. We believe that uniform and equipment set the right tone for excellent learning.

Please ensure that you familiarise yourself with the uniform requirements before purchasing any items. Retailers may not be familiar with the specific THS uniform expectations; advertised 'school shoes' may not be suitable.

Wearing the correct specified uniform at THS helps pupils to:

- feel an equal part of the whole school community
- avoid peer pressure for fashion trends, style and potential bullying issues
- recognise and are proud of the school identity - both in and out of school
- be educated on how to convey respectful formal attire
- prepare for employment after school where a uniform or formal business wear may be required
- show respect for the THS history and tradition
- promotes a professional working environment



We are here to support you

If there are any queries regarding the uniform then please contact your son's Head of Year in the first instance. We will happily provide further clarifications and options to resolve any issue. Mistakes can happen with regards to purchasing or stock availability and, in some justified circumstances, a feasible time scale can be provided where parents have communicated in a supportive manner. If a student is not able to wear any part of uniform because of injury, a medical note must be provided. In these situations a solution will always be sought. We will also support with purchasing uniform where there is financial hardship, please contact your sons Head of Year or the school office.

THS Uniform and Equipment Expectations

All students must adhere to uniform and equipment requirements

Be School READY



THS blazer



THS tie (to waist)



White shirt tucked in



Black tailored trousers



School bag designed to hold A4



Black polishable leather shoes



THS approved coat



Black, grey or navy socks



Full pencil case & Knowledge Organiser



Full THS PE uniform



NO EXCUSES

No mobile phones or electronics



No hoods up (unless raining)



No jeans or chino type trousers



No designer belts or branded buckles



No branded footwear or trainers



No piercings, jewellery and make-up



No dyed or extreme hair



No 'hoodies', sweat shirts, body warmers or 'sports' jackets



All students should follow Uniform and Equipment Rules upon entry to The Howard School grounds.



Are required whilst on school site and in all lessons



Can result in sanction, removal from lessons and/or confiscation of items

Labeled uniform items are provided by the Pastoral Team
Equipment can be bought from the School Shop

Students Appearance

Our uniform is smart and by being consistently worn, promotes our school culture, encourages student self-regulation, reduces bullying, and creates the mindset of being 'dressed for success'.

Students must wear the full school uniform and ensure they are following the 3 TTT's:

1. **T**op button done up,
2. **T**ucked in shirt
3. **T**ie down to waist.

Students must carry their THS blazer at all times.

Students who wear the uniform incorrectly will receive a C5 Same Day Detention.

The Howard School uniform

All students must wear:

- A black blazer with school badge and year ribbon
- Plain white shirt with collar and school tie (to waist)
- Black or dark grey trousers (not skinny fit, denims, cords or jean style)
- Black leather shoes (not trainers, sports shoes, fabric or suede)
- Belts should be plain black without large or designer buckles.
- Plain black, grey or navy socks
- Optional:
 - Jumper must be a black Howard jumper with school badge
 - Plain neutral - black, blue, dark green coloured coat (not sports jackets, not ski coat, no bright colours, small branding only)

All students must carry:

- School bag designed to hold A4
- Full pencil case
- Knowledge Organiser and student planner - provided by school

Any student arriving at school in non-uniform clothing can expect to be sent home (with permission from parents/carers) to change. They can expect to be sent to The Pastoral Office where uniform can be borrowed for the day or placed in Reflections/ Inclusions to do their learning that day. Any student without the correct equipment will in first instance be loaned item/s.



The Howard School uniform

PE and Games Kit:

- Embroidered polo shirt, blue/black shorts and THS purple and white socks, rugby shirt
- Optional:
 - a. Embroidered sweatshirt
 - b. gumshield
 - c. molded boots
 - d. trainers suitable for astro turf

See next page for PE kit and injury policy

Official Uniform Suppliers:

- Rainham Sports, Station Road, Rainham
- Uniformbase, 11 Railway Street, Chatham
- School Time, 23 Railway Street, Chatham
- Sportswear International



PE kit and injury policy for all Howard School students.

All students are to be involved in P.E. and BTEC Sport lessons in some way. If a student is unwell or has a minor injury and is in school, he **MUST STILL GET CHANGED** for P.E. and BTEC Sport and be involved in the lesson in some way, for example as a coach, official or organiser.

Students wearing casts in relation to broken bones etc. and who cannot get changed, will be moved to a classroom for the duration of the lesson. These students will be expected to bring their own work or alternatively P.E. work will be set for them. Students **MUST WEAR** The Howard School kit for P.E. and BTEC Sport lessons. However, should a student not possess the correct school kit, for example if it is on order, then the only **TEMPORARY** alternative measure is a plain white or plain purple T-shirt to 'match' The Howard School kit.

Temporary alternative shorts and jogging bottoms must be plain dark blue or black.

NO BRANDED clothing, such as Nike, Adidas, Lacoste, Calvin Klein, etc. etc., is to be worn in lessons. Students may, however, wear Howard School P.E. tops that have been purchased for annual residential trips or football tours. **NO HOODIES, HOODED JACKETS OR JEWELLERY** are to be worn in P.E. lessons.

PE kit and injury policy for all Howard School students.

If students do not have the correct kit they can borrow a spare school kit before 8.25 only, which they collect from the PE kit room, this must be returned during the school day, in doing this they will be able to participate in their PE lesson with no sanction. This kit is clean and laundered after every use.

If a student collects a kit during AM line up/PD, once reminded by their HOY, then they will receive a 30 minute SDDT.

If a student turns up to a lesson without the correct kit then they will be relocated and receive a 60 min DT. If a student arrives to their lesson without a kit because of a small injury and asks to be excused, they will also receive a DT. Parents/carers will be informed of these detentions via email or phone call on the day.

The reason for this process is that we want to maximise the time in PE lessons and students borrowing kit at the start of lessons will impact on the learning of others. Students must be as organised for PE as they are for all other lessons.

The Howard School shoes – examples of footwear PERMITTED

THS uniform footwear specifies formal office attire shoes with a black polished finish. All the pictures below show examples of shoes that are permitted.



The Howard School shoes – examples of footwear NOT PERMITTED

Ensure that your shoes comply with the THS expectations before purchasing them.

THS uniform footwear specifies formal traditional office attire shoes with a black polished finish.



All the footwear shown are examples of footwear that are not permitted

- Sports fabric/textile material on the main or in part of the shoe design
- Colours other than black for the main shoe, laces, sole trim or other visible shoe detail
- Bold branding, logos or informal design features
- Trainer style shoes
- Low lace trainer-shoes; i.e. Converse style, Vans or hybrid trainer-shoes



COMMON EXAMPLES – footwear NOT PERMITTED at THS

The trainer styles below are common examples of footwear that is not permitted at THS.. THS do not regarded these as traditional formal office attire shoes.



Key features that will help you decide on the appropriateness of footwear are shown below.

1. The trainer-shoe

Low lace design and/or Converse style trainer-shoe is not permitted. This includes the Kicker Low Top Sneaker (pictured below)



Acceptable alternative

Trainer with sport logo and informal textile/sport design



2. The trainer



Acceptable alternative





The Howard School trousers – example of trousers PERMITTED

THS specifies that trousers must be tailored (not jean style), plain black and not heavy cotton or denim material. Trousers must not be skinny fitting and must cover the ankles



COMMON EXAMPLES – trouser styles NOT PERMITTED at THS

The trouser styles below are common examples of trousers that are not permitted at THS..
THS do not regard these as traditional formal trousers.

Key features that will help you decide on the appropriateness of footwear are shown below.

1. Jean Trousers

Jean style tight fitting or baggy trousers

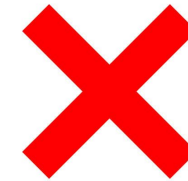


2. Grey or blue trousers



The Howard School belts

Belts must be plain black leather type material with a small non designer buckle



The Howard School Outdoor Coats –

It is important that students have a suitable coat that keeps them warm and dry and can withstand the extremes of weather in the winter months.



Predominantly one dark colour



THS approved



Small discrete logo



Suitable Outdoor Coat

The Howard School Outdoor Coats – styles NOT PERMITTED at THS

Our uniform policy is that coats must not be made of denim or leather, contain graffiti or slogans. Coats must not resemble training top/sports jacket style and must be dark colours. No hoodie, bright/ multi coloured or body warmer type coats



Branded sports jacket/ training top / bright or multi coloured



Hoodies



Oversized bright coats



Bodywarmer



Features such as multiple badges or large logos



Oversized/large hoods



Inappropriate material



Inappropriate features or patterns including 'paint dashed or camouflage design



Jewellery

For safety and security reasons, jewellery should not be worn to school.

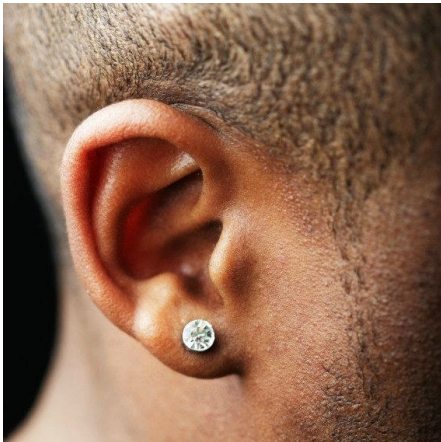
- Watches can be worn, however Smartwatches are not permitted

The following are not permitted:

- Any piercings
- Rings
- Chains
- Bracelets (unless religious)

All watches must be removed for practical lessons.

The school is not responsible for any loss or damage to any items that you choose to bring onto the premises.



Hair

- Long hair must be able to be neatly tied back.
- Hair must be of a natural colour only e.g. no extreme colour difference for highlights, sections or full head dyes.
- A traditional hair style must be presented e.g. no extreme shaved patterns or styles, extreme difference in side and top cut or Mohawk designs.

If you are ever in doubt, please clarify with your HOY before getting your hair styled. If a style is deemed not suitable for attendance at THS then the school will request that the hair style is rectified immediately. This may involve shortening and/or restyling of your hair until it complies with the school standards.

Make-up and other cosmetics

Makeup, nail varnish/polish, henna or other cosmetic enhancements are not to be worn/used in school.

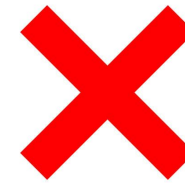
If there is any evidence of any of the above then you will be requested by a member of staff to remove it immediately. Where this is not possible then a student may be placed in Reflections or Inclusions to complete their learning. Please contact your HOY if there are any queries relating to any of the expectations.

School Bag

Students are required to equip themselves with an appropriate school bag. The bag should be big enough to hold an A4 document at least. A bag/s will be needed to carry pencil cases, knowledge organisers, planners, any subject resources as well as PE kit and water bottle (possible packed lunch). Bags should be plain, dark colour with only small logos on them and able to withstand the extremes of the winter months.



Too small

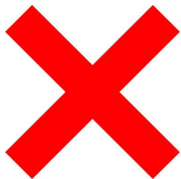


Inappropriate Designs
or features



Head wear

Students are not permitted to wear any headwear within the school buildings. They are are only permitted to wear plain dark coloured beanie type hats during colder months. No oversized hoods were students face cannot been clearly seen are allowed and any hoods must be down when on school grounds.



Drinks and Bottles

We encourage students to drink water throughout the school day to keep hydrated.

We also want the school to be as environmentally friendly as possible and remove the possibility of any waste packaging being dropped in school or the wider community

Therefore all students should bring a refillable bottle to school. It should only be refilled out of lessons during break or lunch

The bottle should be easily identifiable. Note that in exams, the label must also be removed

Coffee and other hot drinks are not be brought into school by THS students

Other drinks that are not allowed in THS include high sugar drinks, fizzy and/or high caffeine and energy drinks.

Any drinks or drink containers not following the THS expectations will be confiscated

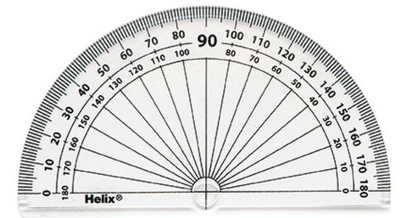
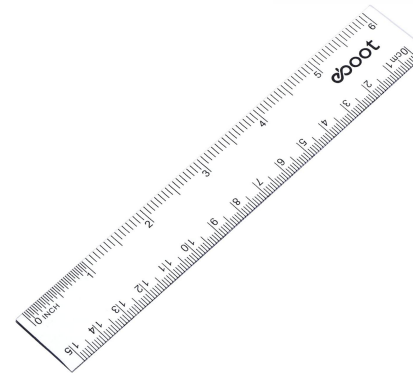


Pencil Case & Knowledge Organiser

Every second of a students education is precious which is why it is important for them to be equipped with the right equipment in every lesson. Anyone arriving at school without a full pencil case and knowledge organiser will in first instance be loaned item/s and set a 30 min detention - repeated failure will result in being sent home (with permission from home) to collect or being placed in IEU. Equipment can be purchased with cash from the school shop. Financial support may be available.

Pencil case contents:

- 2 HB Pencils
- 1 Pritt Stick (Large)
- 1 Rubber
- 1 Metal Sharpener
- 1 Short Ruler
- 1 Protractor
- 2 Biro Black
- 2 Biro Green
- 2 Biro Purple
- 4 Highlighters of different colours
- 1 Dry Wipe Marker Pen
- 1 Coloured Pencil Set



Additional items:

- Scientific calculator

